

**GLASSIUM**





# COMPANY STATEMENT

## OUR MISSION

To improve the quality of people's lives by enhancing the performance of their buildings, with products of the highest quality, technology and aesthetics.

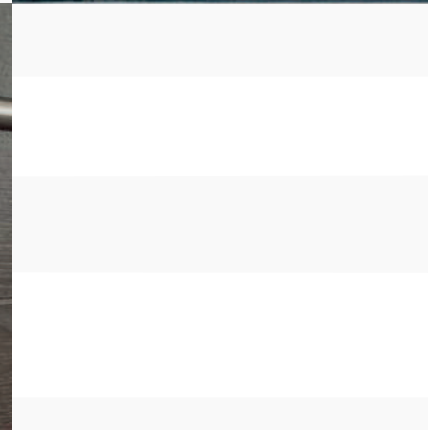
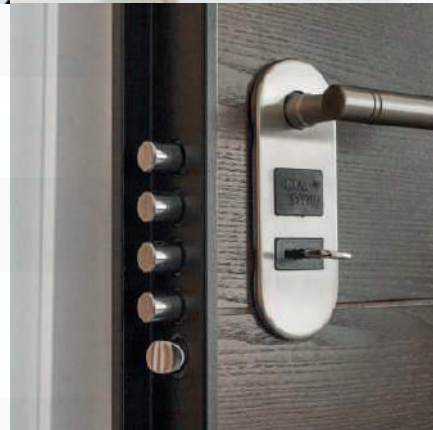
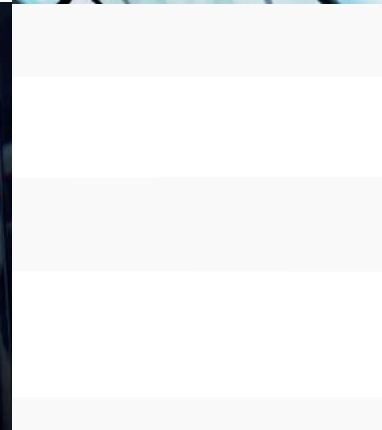
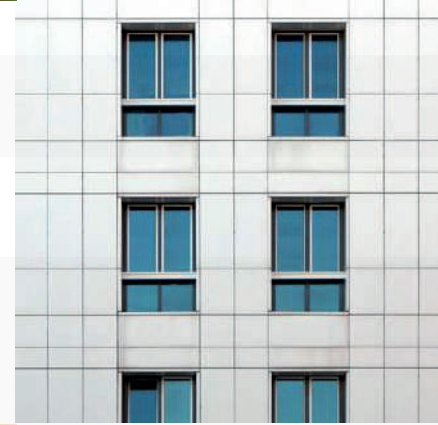
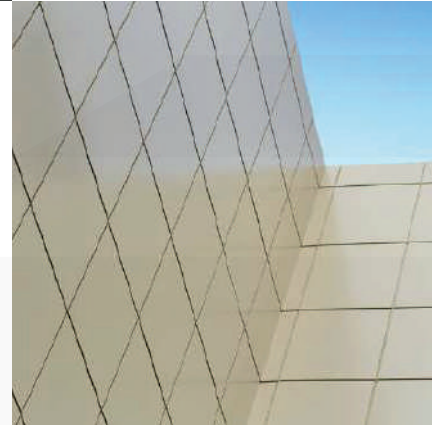
## OUR VISION

To be a leading company in developing and producing aluminium products for architectural applications.

A Passion For  
Making Things Better

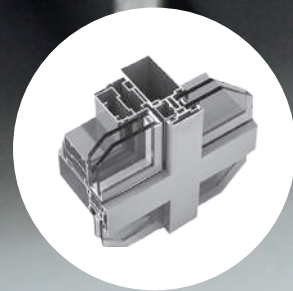


# PRODUCTS PORTFOLIO

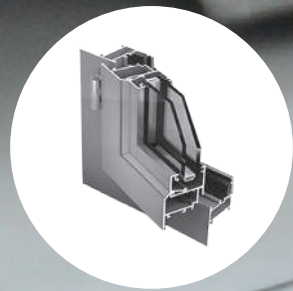




# PRODUCTS PORTFOLIO



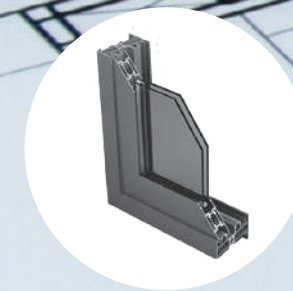
**Curtain Wall**  
50 MM



**Hinged**  
45 MM



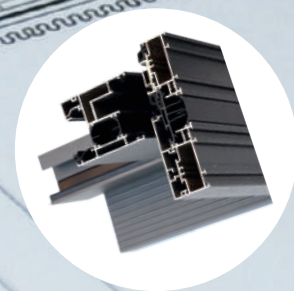
**Guttman**  
Sliding system



**Montana**  
120 MM



**Sliding**  
120-105 MM



**Guttman**  
Sliding system





# PROJECTS LIST

Quality You Can Trust

And count on

Project	Location	Consultant
Mercure hotel	Jabel hafeet- Al Ain	Advent engineering consultancies
Four season hotel	Abu Dhabi	Al Baddad
Residential BLD G+5	Sharjah	Emirates palace contracting
Residential BLD G+4	Sharjah	Emirates palace contracting
Private villa	Abu Dhabi- Khalifa city	I-CON consultant engineers
Private villa	Abu Dhabi- AL Saadiyat island	Advent engineering consultancies
Private villa	Abu Dhabi- Al Shahama	Advent engineering consultancies
Private villa	Abu Dhabi- Khalifa city	Advent engineering consultancies
Private villa	Abu Dhabi- Al Raha	Advent engineering consultancies
Private villa	Dubai- Al Mezhar	First art engineering consultancies
NMC Clinic	Abu Dhabi	Advent engineering consultancies
Private villa	Ajman	Al Jedran consultants
Delma hotel	Abu Dhabi- Delma island	Advent engineering consultancies
Sunsation restaurant	Dubai- Motor city	Direct
Private villa	Ned Al Sheba	Direct
Mosque	Dubai- Memzar	Jaan interiors contracting
Private villa	Medos	Direct
Private villa	Dubai Hills	Direct
Private villa	Dubai Hills	Direct
Private villa	Dubai Hills	Direct
Labor accomodation	Dubai- DIP	Buraq al lail contracting
BLD G+P2+7	Abu Dhabi	Advent engineering consultancies
BLD G+P2+11	Abu Dhabi	Advent engineering consultancies

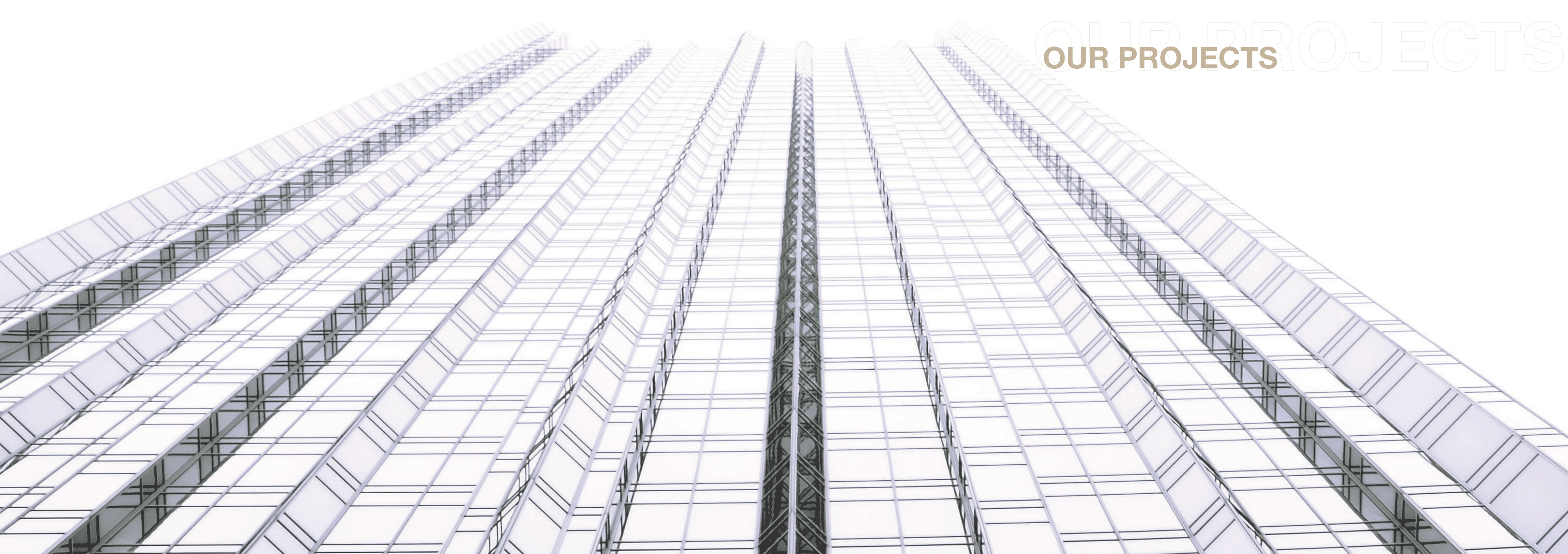




# AREA OF EXPERTISE

- GLASS ROOM
- CURTAIN WALLS
- ALUMINIUM WINDOWS
- STAINLESS STEEL HANDRAILS
- FRAMELESS DOORS & WALL PARTITIONS
- TWO OR FOUR WAYS STRUCTURAL GLAZING
- CAST ALUMINIUM DOORS, WINDOWS, GATES & SAFETY GRILLS
- FIRE-RATED DOORS, WINDOWS AND CANOPIES
- AUTOMATIC SLIDING DOORS AND GATES
- WOODEN POWDER-COATED ALUMINIUM
- EXTERNAL SHADES, CAR PARKING
- STAINED GLASSWORKS
- FENCES





# OUR PROJECTS





## Mercure Hotel & Suites

Jabal Hafeel - Alain

---

Curtain Wall - Glazed Interfaces



## Mercure Hotel & Suites

Jabal Hafeel - Alain

---

Curtain Wall - Glazed Interfaces





## Four Seasons Hotel

Abu Dhabi

---

Curtain Wall - Glazed Interfaces



## Private Villa

Alsaadiyat Island - Abu Dhabi

---

Curtain Wall - Sliding





## Private Villa

Abu Dhabi

Curtain Wall - Aluminium Doors & Windows

## Private Villa

Abu Dhabi

Curtain Wall - Aluminium Doors & Windows





## Building G+4

Muwaileh - Sharjah

---

Thermal - Break



## Private Villa

Abu Dhabi

---

Curtain Wall - Aluminium Doors & Windows





# QUALITY HEALTH & SAFETY ENVIRONMENT

For us, it is not enough to simply supply high quality products and services to our customers. Although our primary goal is to ensure total customer satisfaction, we also have to protect the environment and the welfare of our employees and the public.

Managing Quality Health and Safety Environment (QHSE) matters is a vital part of our business. We guarantee the QHSE Management System integrity of our process and facilities.





## TRAINING OF EMPLOYEES ON QUALITY ASPECTS

Paying close attention to the importance of the human factor in achieving high quality, we define for each position a specific quality control directive that must be followed carefully.

Additionally, group training is carried out regularly regarding new products, as well as re-training for existing ones.





# CONSULTANCY

Massar would be glad to provide technical & commercial support to identify the suitable aluminium products, suggest the right profile section with minimum size for project feasibility:

- Review of the architectural designs, project specifications and all associated reference documentation.
- Shop drawings
- Thermal analysis
- Structural calculation
- Die drawings
- Fabrication drawings
- M.T.O (Material Take Off)
- As built drawings